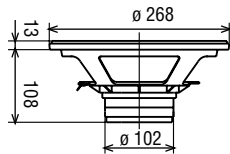
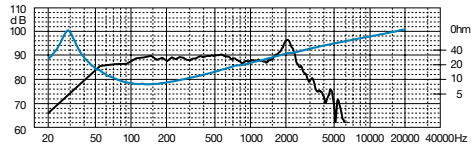


# HW 251

240 Watt max | 8  $\Omega$  |  $\varnothing$  250 mm / 10"



|                             |  |     |                                |          |                           |
|-----------------------------|--|-----|--------------------------------|----------|---------------------------|
| Potenza nominale            | <b>120 W</b>   | Re  | <b>6,5 <math>\Omega</math></b> | D        | <b>210 mm</b>             |
| Impedenza nominale          | <b>8 <math>\Omega</math></b>                                       | Fs  | <b>29 Hz</b>                   | Vas      | <b>111 dm<sup>3</sup></b> |
| Sensibilità (1W/1m)         | <b>91 dB</b>   | Qms | <b>5,25</b>                    | Bxl      | <b>12,29 Wb/m</b>         |
| $\varnothing$ bobina mobile | <b>38 mm</b>   | Qes | <b>0,36</b>                    | Xmax     | <b>4 mm</b>               |
| Altezza traferro            | <b>8 mm</b>  | Qts | <b>0,33</b>                    | $\eta_o$ | <b>0,74 %</b>             |
| Fori di fissaggio           | <b>8 <math>\varnothing</math> 5 / <math>\varnothing</math> 253</b> | Mms | <b>45 g</b>                    | Le       | <b>2,2 mH</b>             |
| Foro pannello               | <b>232 mm</b>  | Cms | <b>0,66 mm/N</b>               | Peso     | <b>2,8 Kg</b>             |



## WOOFER

Membrana in cellulosa smorzata e sospensione in gomma  
Doped paper cone, rubber surround

