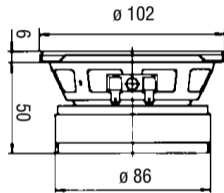
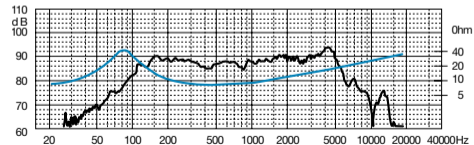


HW 100

150 Watt max | 8 Ω | Ø 100 mm / 4"



| | | | | | |
|---------------------|---------------------------------|-----|------------------|----------------|-----------------|
| Potenza nominale | 50 W | Re | 6 Ω | D | 80 mm |
| Impedenza nominale | 8 Ω | Fs | 70 Hz | Vas | 4,3 dm³ |
| Sensibilità (1W/1m) | 89 dB | Qms | 2 | Bxl | 5,6 Wb/m |
| Ø bobina mobile | 25 mm | Qes | 0,37 | Xmax | 3 mm |
| Altezza traferro | 5 mm | Qts | 0,31 | η _o | 0,31 % |
| Fori di fissaggio | 4^{ø5,5} / Ø 116 | Mms | 4,26 g | Le | 0,37 mH |
| Foro pannello | 91 mm | Cms | 1,22 mm/N | Peso | 0,97 Kg |



WOOFER

Membrana in cellulosa smorzata e sospensione in gomma
Doped paper cone, rubber surround

